



# Gracie



Gynaecological workplace



# Gynaecological workplace

The gynaecological workplace GRACIE creates an attractive environment for both the doctor and the patient while focusing on ergonomics and efficiency of examination.



reddot design award  
winner 2011



HDMI



3



- 1 FULL HD Video colposcope
- 2 FULL HD LCD (1080i)
- 3 Wireless transfer of photos and videos into the doctor's PC
- 4 Connection of the chair with ultrasound machine
- 5 Wireless foot controller
- 6 Broad selection of colour designs
- 7 Reduction of spatial demands by 40%
- 8 Instrument trolley





# Video colposcope

1080  
FULL HD

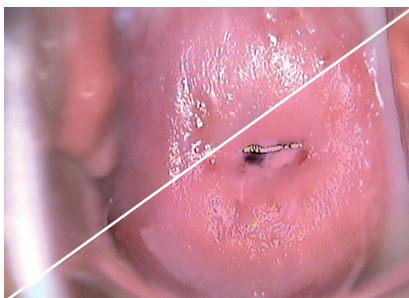
Integration of a FULL HD video colposcope into the chair reduces demands on space and increases examination efficiency at the same time.



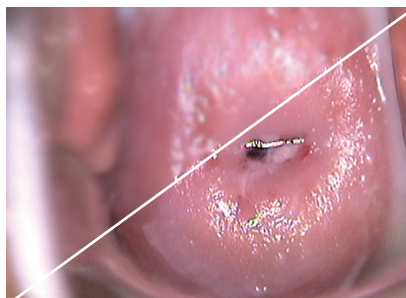
## Practical functions:

- Automatic/manual focusing
- 20× optical zoom
- FULL HD resolution
- Freeze image
- Capturing photos and videos
- Wireless transfer of photos and videos into PC
- Green filter
- 3 intensities of LED illumination
- Polarizing filter

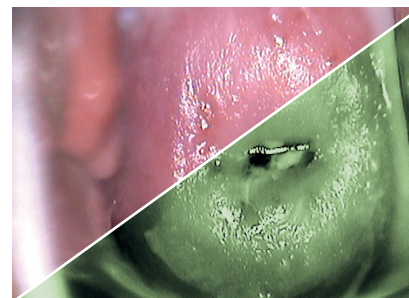
*Parking position of the video colposcope is located under the heated seat and does not reach outside the floor plan of the chair so it does not get in the way during work.*



*The polarizing filter eliminates unpleasant glare during examination.*



*The FULL HD video colposcope provides high details for precise diagnostics.*



*The green filter enhances the red colour of the capillaries while eliminating the interfering perception of the surrounding tissue.*



# LCD screen

The wide FULL HD screen makes the viewing of major details possible.

The height and adjustment of the screen allows proper ergonomics during use. The possibility of attachment to either the left or right side of the chair.

## Practical functions:

- Automatic detection of the input signal
- Tilting of the screen towards the patient
- Tilting of the screen towards the doctor
- Easy control



Video colposcope – basic technical data

Working distance	240–330 mm
Depth of focus	10 mm
Resolution of photos and videos	1920×1080 px
Data transfer	WLAN, LAN

LCD screen – basic technical data

Horizontal adjustment of the screen	–55°/+55°
Tilting angle of the screen	0°/+15°
LCD screen size	21"
Resolution	1920×1080 px

# Wireless solution

The gynaecological workplace GRACIE makes wireless connection to your computer possible.

The main benefits are:

- Simple, comfortable and quick to use
- Possibility of connection to the existing network in your workplace
- Higher safety, no more cables
- It does not require installation in your computer
- Photos and videos are stored in the memory of the chair



## PD Dr. Matthias Scheier

*Fetal medicine, Feldkirch, Austria*

“The gynaecological chair GRACIE combines modern design with high functionality. Most of all, I appreciate the successful integration of a video colposcope without any additional spatial demands and the possibility of transferring images from the colposcope via WLAN. And if needed, the chair can be instantaneously turned into a bed.”



# Instrument trolley

The instrument trolley saves space in the office and provides the doctor with maximum comfort during work.

Practical functions:

- Heating of vaginal specula
- Ergonomic placement of instruments
- Baskets for waste and used specula
- Brakable front castors



The possibility of heating the instruments before examination increases the comfort of the client.



Rear basket for used specula can be filled with disinfectant solution.



Basic technical data

Width	520 mm
Length	600 mm
Height	1,125 mm
Weight	47 kg
Volume of the waste baskets	18/13 l
Volume of the rear basket for used specula	18 l
Volume of the upper vessel for specula	13 l



Practical slide for used specula.



# Complex solution

The gynaecological chair GRACIE combines the advantages of a chair and a bed in one device.



#### ACCESS POSITION

Very low access position suitable also for less mobile patients without the need of additional access steps.



#### EXAMINATION POSITION

The range of adjustment of examination positions ensures the doctor comfort during work.

## Ease of operation

Unambiguous controls save time and increase the certainty of the doctor during examination.

The unique design of the rest area allows the optimum and natural setting of the position of the pelvis for internal examination without the need of setting up the seat part.

Gracie is up to **30%** faster than other gynaecological chairs.



#### FIXED FOOT CONTROLLER

Is used to adjust the examination position according to the individual proportions of the patient.



#### WIRELESS FOOT CONTROLLER

Mobile wireless controller for the adjustment of the access, ultrasound and examination positions with a range of 10 metres.



#### HAND CONTROLLER

The possibility of saving positions in the memory (access, examination and ultrasound position) for three doctors – this makes 9 memory positions in total.



**VIDEO COLPOSCOPE EXAMINATION**  
*The integrated video colposcope reduces spatial demands and increases efficiency of the examination.*



**ULTRASOUND POSITION**  
*The possibility to move the chair into the ultrasound position saves the doctor time, shortens the examination time and reduces spatial demands in the office.*

## Foot rests

Electric adjustment of the foot rests facilitates the doctor's work and makes the patient's stay on the chair more pleasant.

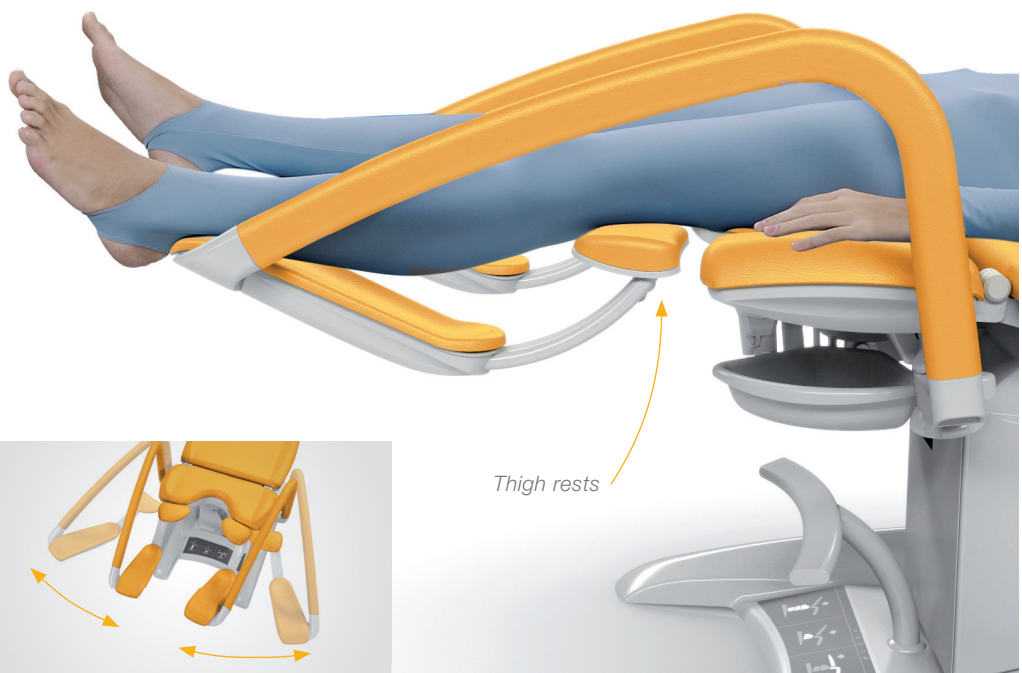
They also serve as a support for the patient's legs when lying in the horizontal position.



*The foot rests can be removed for easier handling of an immobile patient.*



*Synchronous connection of the rests allows easy horizontal adjustment with just one hand.*



# Hygiene without compromises

The gynaecological chair GRACIE is equipped with a telescopic castor intended for moving the chair around the office.

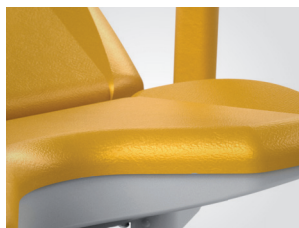
This original solution allows extremely easy handling of the chair.

## Main advantages

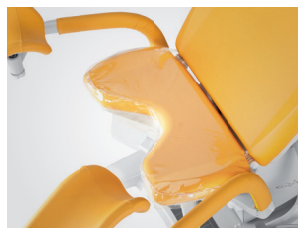
- Antibacterial artificial leather
- Seamless upholstery
- PVC covers of selected parts of the chair
- Compact and closed surfaces
- Removable upholstery



*Removable upholstery.*



*Seamless upholstery.*



*PVC cover.*



*Every chair is equipped with an integrated paper roll.*



# Safety

Elimination of cutting points increases the safety of the doctor during work and of the patient during examination.

Wireless control of the chair and wireless transfer of photos and videos into a PC solves the problem of obtrusive cables on the office floor.

## Main advantages

- Sturdy design
- Trendelenburg
- Safety collision sensor
- Battery charge indicator
- Wireless foot controller
- STOP function
- Backup battery with charge indicator



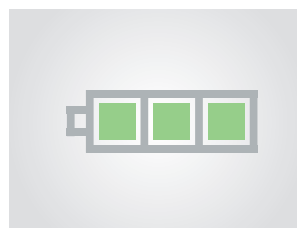
*Intuitive stopping of the chair by any button speeds actions during critical moments.*



*The safety sensor stops the movement of the chair when the chair is deflected.*



*The safety sensor stops the chair if it collides with the video colposcope.*



*Battery charge indicator.*



*Trendelenburg.*

# Colour designs



*M – Corn yellow*

- A – Violet
- B – Brilliant blue
- C – Bright red
- E – Copper green
- F – Ocean green
- G – Cloudy grey
- H – Pearl white

- J – Night blue
- K – Marble white
- L – Lavender
- P – Orange
- O – Black\*
- T – Pink\*
- D3 – Pastel orange

\* for an additional charge

# Standard equipment

	GKB-AX Standard version	GKB-CX – Video colposcope version	GKB-GX – FULL HD Video colposcope version
Foot rests (standard /Goepel)	•	•	•
Fixed foot controller	•	•	•
Mobile wireless controller	•	•	•
Hand controller	•	•	•
Castor	•	•	•
PVC underseat cover	•	•	•
PVC foot rest cover	•	•	•
3 memory functions for 3 doctors	•	•	•
Paper roll holder	•	•	•
Rotary plastic bowl	•	•	•
Antibacterial artificial leather	•	•	•
Seamless upholstery	•	•	•
Selection of colour designs	•	•	•
Equipotential coupling	•	•	•
One button Trendelenburg	•	•	•
Network cable according to your selection	•	•	•
Backup battery with charge indicator	•	•	•
Indication of improper fitting of the chair into place	•	•	•
Transport packaging	•	•	•
17" LCD screen		•	
21" FULL HD LCD screen			•
Integrated video colposcope		•	
Integrated FULL HD video colposcope			•
Video colposcope LED illumination		•	•
Three light intensities of the video colposcope			•
Integrated polarizing filter		•	•
WLAN/LAN connection of the chair to a PC		•	•
HDMI IN/OUT			•
VGA IN		•	•
VGA cable		•	
Ethernet cable		•	•

# Technical parameters

## Height adjustment

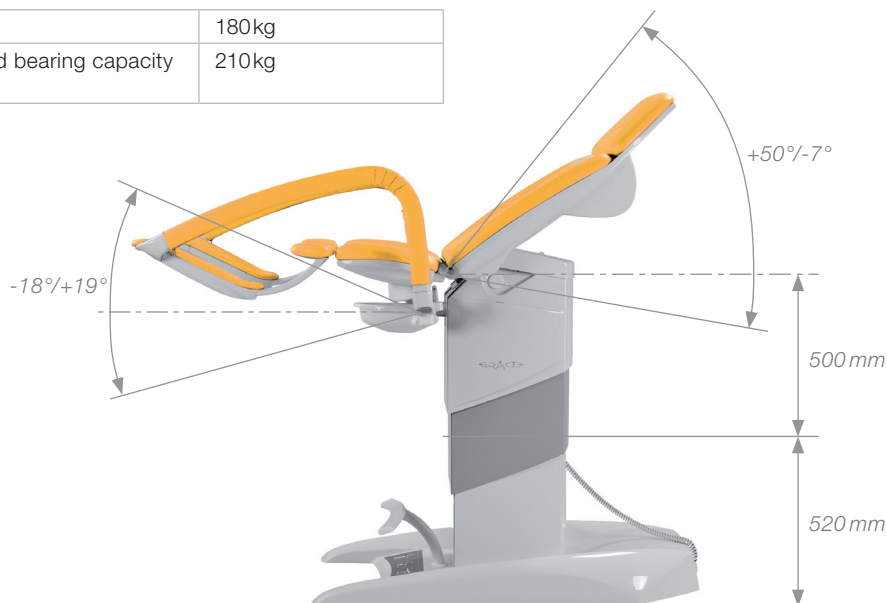
Access height (seat)	520 mm
Max. height (seat)	1,150 mm

## Maximum load

Patient load	180kg
Maximum load bearing capacity of the chair	210kg

## Dimensions

Chair width – seat	630 mm
Chair width – total	760 mm
Chair length – max.	1,780 mm

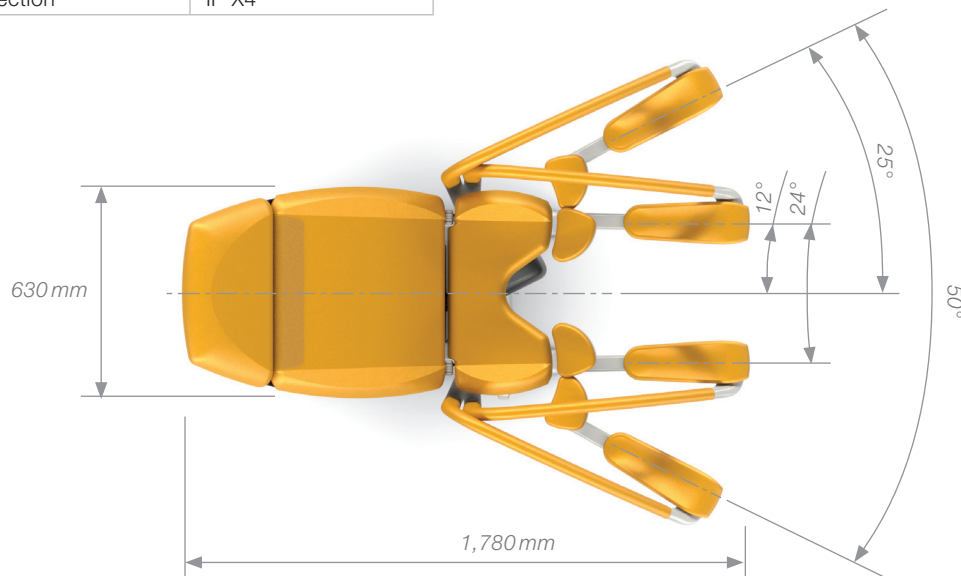


## Electrical parameters

Voltage	100–230 V
Frequency	50/60 Hz
Applied parts type	CF
Protection class	I
Degree of protection	IP X4

## Power adjustment

Back section positioning angle	$-7^{\circ}/+50^{\circ}$
Foot rest height adjustment angle	$-18^{\circ}/+19^{\circ}$
Seat section positioning angle	$+5^{\circ}/+10^{\circ}$





# Accessories



GKB-021 | Doctor's foot support



GKB-060.19 | Spare mobile wireless foot controller (max. 4 pcs)



ZP-25.X | Fixation strap (pair)



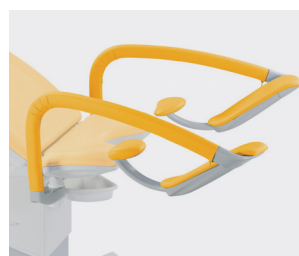
GKB-041 | Eurolath, stainless steel, left\*



GKB-117 | Eurolath, stainless steel, back section, left\*



GKB-205.X | PFoot rests without a lamp – L/R divisible version



GKB-201.X | Standard foot rests



GKB-207.X | Goepel type leg rests



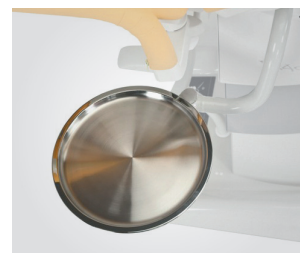
GKB-141 | S-video output for external display device, left\*



GKB-230 | Socket terminal



Optical colposcope holder\*



GKB-055 | Instrument bowl, large, stainless\*



GKB-097 | Large bowl with attachment, stainless



GKB-054 | Instrument bowl, plastic



GKB-168.X | Heating of the seat part



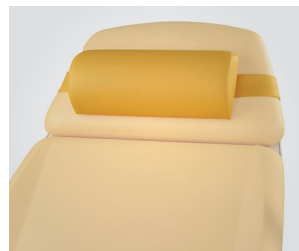
GKB-115.X | Leg plate



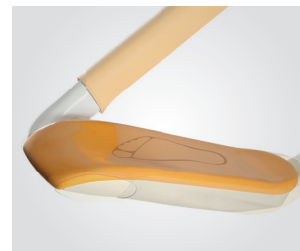
GKB-116 | *External paper roll holder*



GKB-092.X | *Bolster, flat*



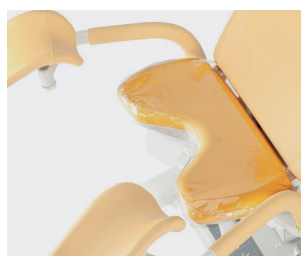
GKB-093.X | *Bolster, semicircular*



GKB-098 | *PVC cover of foot support (pair)*



GKB-077 | *PVC underseat cover*



GKB-163 | *PVC cover of the seat part*



GKB-111 | *PVC cover of the head section*



GKB-112 | *PVC cover of the semicircular bolster*



GKB-076 | *Doctor's chair – ergonomic, adjustable with one's leg*



ZK-05.X | *Doctor's chair, height adjustable, with manual locking*



GKB-075 | *Doctor's chair – ergonomic, height adjustable, with manual locking*



### The chair was designed by Jiří Španihel

The name of the chair was inspired by Greek mythology, by combining the characteristics of three sisters into one. The gynaecological workplace GRACIE brings you complexity, dynamics and design in one whole.



# Gracie

## Client

- Gynaecological and ultrasound examination on one chair
- Above standard comfort during examination
- Comfortable even for less mobile clients
- Pleasant design and colour scheme



- Work ergonomics during examination
- Integrated functions and quick setup
- Accurate diagnosis
- Space-saving



## Staff

## Management

- Latest technology
- The attractive design increases equipment prestige
- A comprehensive solution for the surgery
- Setup option for more doctors



Members of LINET Group

### LINET spol. s r.o.

Želečnice 5 | 274 01 Slaný | Czech Republic

tel.: +420 312 576 400 | fax: +420 312 522 668 | e-mail: [info@linet.com](mailto:info@linet.com) | [www.linet.com](http://www.linet.com)



Manufacturer: Borcad Medical a. s., 739 45 Fryčovice 673, Czech Republic, Member of LINET Group  
LINET | Art. n° 9601-1059 | Edition 06/2017 | Different colour shades possible. Change of technical parameters reserved.